



A-Raf Polyclonal Antibody

Catalog No	YP-Ab-14665
Isotype	IgG
Reactivity	Human;Mouse;Rat;Monkey
Applications	WB;ELISA
Gene Name	ARAF
Protein Name	Serine/threonine-protein kinase A-Raf
Immunogen	The antiserum was produced against synthesized peptide derived from human A-RAF. AA range:241-290
Specificity	A-Raf Polyclonal Antibody detects endogenous levels of A-Raf protein.
Formulation	Liquid in PBS containing 50% glycerol, 0.5% BSA and 0.02% sodium azide.
Source	Polyclonal, Rabbit,IgG
Purification	The antibody was affinity-purified from rabbit antiserum by affinity-chromatography using epitope-specific immunogen.
Dilution	Western Blot: 1/500 - 1/2000. ELISA: 1/20000. Not yet tested in other applications.
Concentration	1 mg/ml
Purity	≥90%
Storage Stability	-20°C/1 year
Synonyms	ARAF; ARAF1; PKS; PKS2; Serine/threonine-protein kinase A-Raf; Proto-oncogene A-Raf; Proto-oncogene A-Raf-1; Proto-oncogene Pks
Observed Band	68kD
Cell Pathway	intracellular,mitochondrion,cytosol,
Tissue Specificity	Predominantly in urogenital tissues.
Function	catalytic activity:ATP + a protein = ADP + a phosphoprotein.,cofactor:Binds 2 zinc ions per subunit.,function:Involved in the transduction of mitogenic signals from the cell membrane to the nucleus.,similarity:Belongs to the protein kinase superfamily.,similarity:Belongs to the protein kinase superfamily. TKL Ser/Thr protein kinase family. RAF subfamily.,similarity:Contains 1 phorbol-ester/DAG-type zinc finger.,similarity:Contains 1 protein kinase domain.,similarity:Contains 1 RBD (Ras-binding) domain.,subunit:Interacts with TH1L/NELFD.,tissue specificity:Predominantly in urogenital tissues.,
Background	This proto-oncogene belongs to the RAF subfamily of the Ser/Thr protein kinase family, and maybe involved in cell growth and development. Alternatively spliced transcript variants encoding different isoforms have been found for this gene.[provided by RefSeq, Jan 2012],

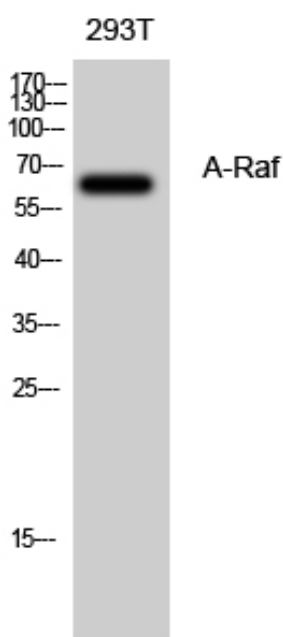
**matters needing attention**

Avoid repeated freezing and thawing!

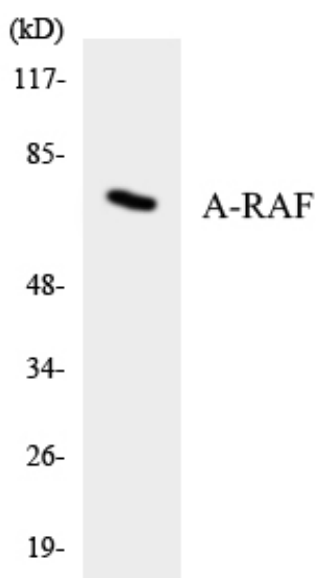
Usage suggestions

This product can be used in immunological reaction related experiments. For more information, please consult technical personnel.

Products Images



Western Blot analysis of 293T cells using A-Raf Polyclonal Antibody diluted at 1:500



Western blot analysis of the lysates from HeLa cells using A-RAF antibody.